



**Application for Permanent Spacing Unit  
Application for Compulsory Pooling**

**Taylor LW 14-23 #1H  
All of Sections 14, 15, 22 & 23 - T25N - R58E  
Richland County, Montana**

**Department of Natural Resources  
And Conservation  
Board of Oil & Gas Conservation  
Of the State of Montana  
Docket No. 11-2021 & Docket No. 12-2021  
April 8th, 2021**



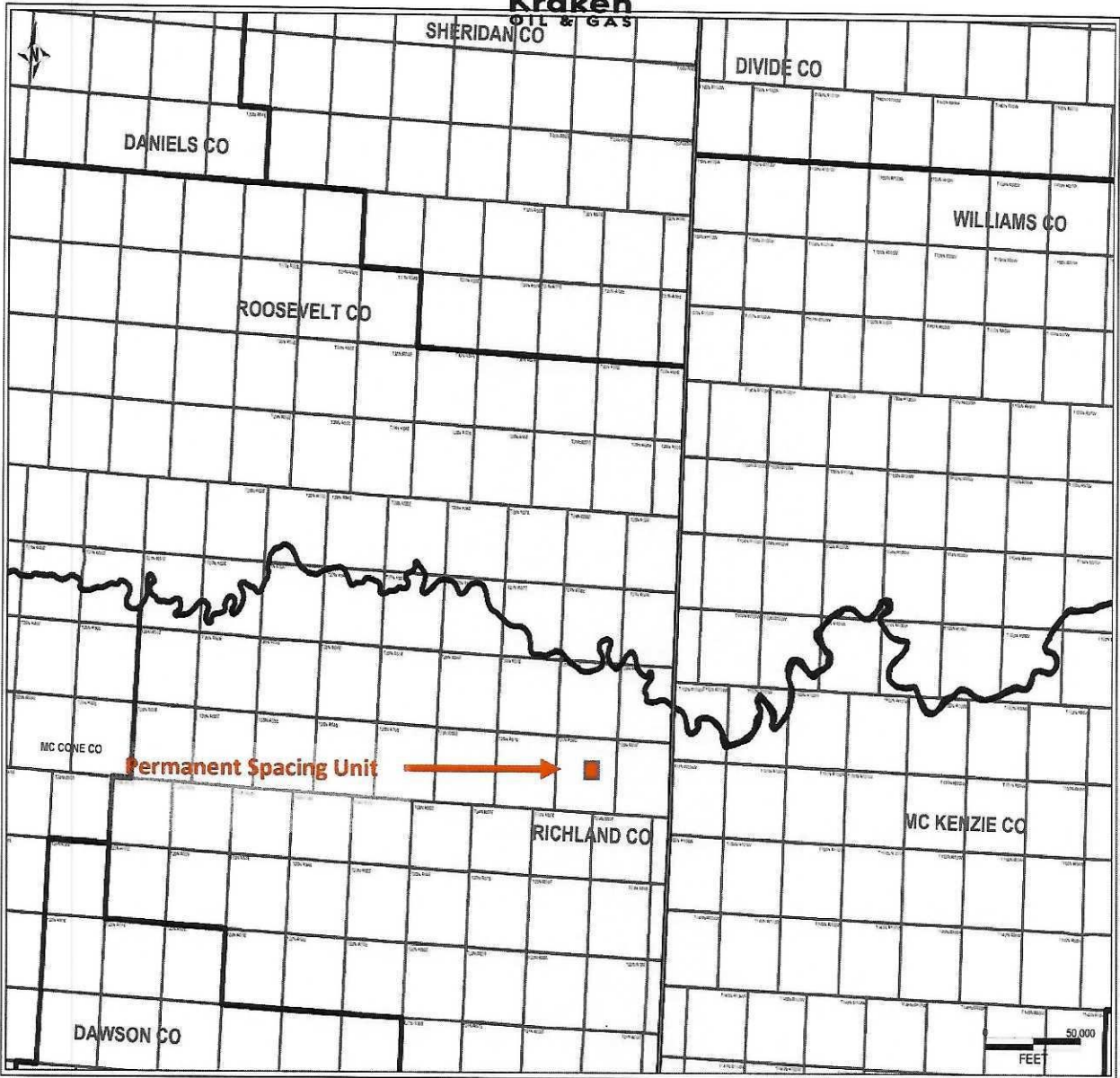
**Docket No. 11-2021 & Docket No. 12-2021**

**TABLE OF CONTENTS**

<u>DESCRIPTION</u>	<u>EXHIBIT NO.</u>
Regional Location Map	L-1
Tract Map	L-2
Ownership Schedule	L-4
Middle Bakken Reservoir Structure Map	G-1
Middle Bakken Reservoir Isopach Map	G-2
Type Log	G-3
Wellbore Diagram	E-1
Well Plat	E-2
Reserves and Economic Analysis	E-3
Production Profile	E-4



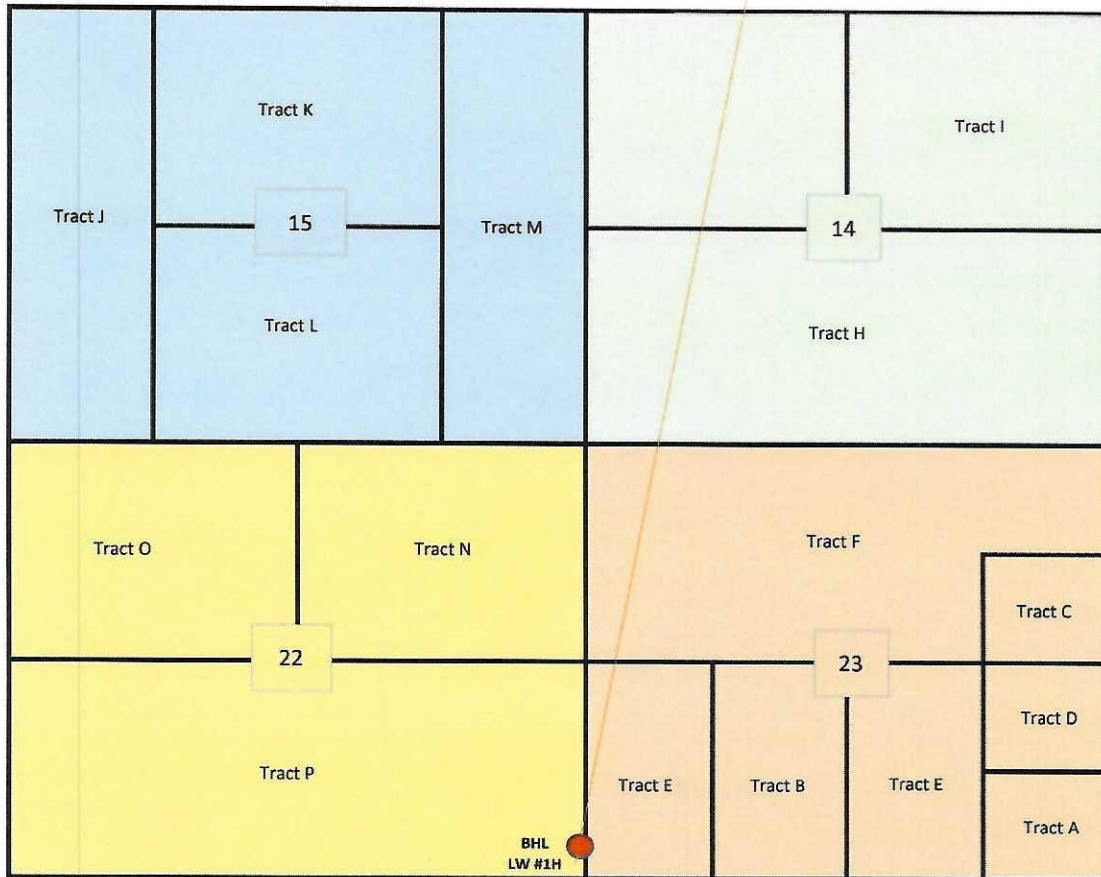
**Kraken**  
OIL & GAS



**Regional Locator Map**  
Permanent Spacing Unit  
T25N-R58E-Sections 14, 15, 22 & 23  
Richland County , Montana



Surface Location



Recapitulation		
Tract #	Acres	% in CA
Tract A (FEE)	40.00	1.56%
Tract B (FEE)	80.00	3.13%
Tract C (FEE)	40.00	1.56%
Tract D (FEE)	40.00	1.56%
Tract E (FEE)	160.00	6.25%
Tract F (FEE)	280.00	10.94%
Tract G (FEE)	160.00	6.25%
Tract H (FEE)	320.00	12.50%
Tract I (FEE)	160.00	6.25%
Tract J (FEE)	160.00	6.25%
Tract K (FEE)	160.00	6.25%
Tract L (FEE)	160.00	6.25%
Tract M (FEE)	160.00	6.25%
Tract N (FEE)	160.00	6.25%
Tract O (FEE)	160.00	6.25%
Tract P (FEE)	320.00	12.50%
<b>2560.00</b>	<b>100.00%</b>	



**Working Interest Summary**

Kraken Oil & Gas LLC	35.92295%	Blackland Petroleum, LLC	0.00001%	Judith A. Egr	0.02279%
Basin Acquisition Fund LP	15.68314%	Sandra Levorsen and Clifton Levorsen	0.0434%	Larry D. Kern	0.09766%
Basin Co-Investment II, LP	7.06503%	R.L. Fawcett	0.04883%	Maurine Johnston	0.01709%
Continental Resources, Inc.	8.78029%	Cow Gulch Oil Company	0.53711%	Melissa McLeod	0.02821%
Dakota Ventures I, LLC	0.22277%	Endeavor Energy Resources, LP	0.26476%	Melvin G. Maier	0.07813%
Equinor Energy, LP	18.61687%	Dee Bentley, Inc.	0.00003%	Michael A. Moran	0.03617%
Goldline Creek, LLC	0.26732%	East End Energy, Inc.	0.25391%	Michael F. Craven	0.00087%
Beyond Horizon, LLC	0.12630%	Kenneth J. Kundink	0.00001%	Northland Services Inc.	0.13021%
Dunn River Resources, LLC	0.04340%	Mark Gatorf	0.21094%	The Grebe Family Trust	0.06076%
Grandhaven Energy, LLC	1.29204%	Marshall Resources, LLC	0.00001%	Patricia Swenson-Green	0.01302%
Gunlikson Petroleum, Inc.	0.00217%	Paragon Oil & Gas LLC	0.09258%	Paulette P. Kern	0.09766%
Inland Oil & Gas Corporation	0.05642%	Rim Nominee Partnership	0.00116%	Roger Borchert	0.01085%
Left Coast Oil and Gas, LLC	0.54319%	Robert L. Segal Trust	0.42188%	Sandra C. Day (Carter)	0.02026%
Knapp Oil Corporation	0.55881%	TCG Limited Partnership	0.78125%	Sister Sarah James	0.00434%
Leon & Norfee Conitz	0.01302%	Vesco Family LLLP	0.00013%	Vesta, LP	0.07800%
Lynx Oil Company	0.04883%	Wendy Gatorf	0.05469%	Susanne A. Houston	0.00244%
NIWOT Resources, LLC	0.00163%	White Rock Oil & Gas GP I, LLC	0.39900%	Tina Thorson	0.00217%
Poplar Energy Company, LLC	0.01157%	White Rock Oil & Gas Partners I-B, LP	0.06975%	W.W. Fisher	0.02441%
Posse Operating, Inc.	0.09766%	Bryant Clark	0.03255%	Wanda Peterson	0.10851%
Prima Exploration, Inc.	0.01655%	Richard Clark	0.03255%	<b>Total:</b>	<b>100.00000%</b>
ROEC, Inc.	0.06943%	Anne Reed	0.00244%		
Ronald Knight	0.10417%	Atropos Exploration Company	0.01761%		
Sundheim Oil Corporation	0.31738%	Brenda Teske	0.02713%		
Triology Oil and Gas, LLC	0.14648%	Brian Fisher	0.02713%		
Matthew H. Paris	0.04340%	Donna M. Snyder	0.00244%		
Patrick Elliott	0.04720%	Dorothy Dittmer Living Trust	0.01221%		
Twin City Technical LLC	0.01085%	Elico Resources, Inc.	0.07813%		
Red River Resources, Inc.	0.09440%	Fred S. Jensen	0.00977%		
LSM Energy, Inc.	0.04340%	James A. Muri	0.01221%		
Cobra Oil & Gas Corporation	4.71001%	James E. Strand	0.00326%		
Vitesse Energy, LLC	0.26042%	James P. Byrne Mineral Trust	0.00434%		
Arnold Greenberg	0.19531%	James Smith	0.01221%		
Key Production Co., Inc.	0.14332%	Jo Ann Brooks	0.15734%		
Blackbear Oil & Gas, LLC	0.00001%				



Non-Consent Working Interest  
Released Working Interest



Ownership Schedule  
T25N-R58E- Sections 14, 15, 22 & 23  
Richland County, Montana

Tract A (40.00 Acres)

**Mineral and Royalty Owners**

SS/GAE, LTD  
ATROPOS EXPLORATION COMPANY  
EDDIE JAMES PETERSON  
KATRINA HARRIS  
BRIAN DUANE BEECHER  
EIDET RESOURCES, LLC  
SUSAN STEARNS  
PAMELA D. HESTEKIN  
DONALD C. HESTEKIN  
JEANNE HARTERT FKA JEANNE BROOKS  
ROBERT POST JOHNSON  
ROGER N. BORCHERT  
TERRY L. HARRIS  
DUDLEY J. STUBER, TRUSTEE OF THE D.J. STUBER L MARK R. GADWAY  
CLUB OIL & GAS, LTD.  
RAYMOND T. DUNCAN OIL PROPERTIES, LTD.  
WALTER DUNCAN OIL  
RAYMOND T. DUNCAN OIL PROPERTIES, LTD.  
CLUB OIL & GAS, LTD.  
DONNA SPRAGUE  
CATHERINE LEE SUGIMURA  
DEBRA JEAN ROHNER  
JEFFREY CARL SKJOTHAUG  
GREGORY PHILLIP SKJOTHAUG  
KENNETH SKJOTHAUG  
JANET M. KONGSALA  
DONNA M. SPRAGUE  
ARTHUR SKJOTHAUG  
DWANE E. SKJOTHAUG  
DONALD J. SKJOTHAUG  
CAROL YADON  
CLUB OIL & GAS, LTD.  
RAYMOND T. DUNCAN OIL PROPERTIES, LTD.  
WALTER DUNCAN OIL  
ALFRED W. DOOLEY  
GERALDINE SCHIEFFER  
FLORENCE E. DOOLEY  
ANN MARIE ROHDE

Tract A (40.00 Acres Con't)

GERALD DOOLEY  
EILA WICK  
VONDA SELIGER  
JAMES L. STUBBS  
ROBERT H. STUBBS  
CHARLOTTE PAYETTE  
RUTH MARIE HOWARD  
ROBERT ENGEN  
EVELYN FALKENHAGEN  
HAROLD ENGEN  
MARY VOLLUM  
ELSIE LORENZ  
GEORGE AND ELISABETH HUNTER  
CASEY GADWAY  
ECM RESOURCES, INC.  
SANDRA K. ZARLINGO  
PATRICK L. BELCASTRO  
REED CO.  
BRIDGEPOINT MINERAL ACQUISITION FUND 2, LLC  
HAT CREEK ROYALTY LTD.  
TRI-STAR MINERALS  
H-S MINERALS AND REALTY, LTD.  
HILL INVESTMENTS, LTD.  
Manada Resources, LLC  
Debra L. Belcastro

Working Interest Owners

Kraken Oil & Gas, LLC  
Dakota Ventures I, LLC  
East End Energy, Inc.  
Donna M. Snyder  
Dorothy Dittmer Living Trust  
Anne Reed  
Fred S. Jensen  
Goldline Creek, LLC  
Grandhaven Energy, LLC  
James A. Muri  
James Smith  
KKREP, LLC  
Lynx Oil Company  
Mark Gatof  
Maurine Johnston Trust  
Monkota Petroleum Corp.  
Paragon Oil & Gas, LLC  
Poplar Energy Company, LLC  
Porovidence Minerals, LLC  
Evelyn R. Segal Trust  
ROEC, Inc.  
Segal Oil & Gas, Inc.  
W.W. Fisher  
Wendy Gatof  
White Rock Oil & Gas GP I, LLC  
White Rock Oil & Gas Partners I-B, LP



Ownership Schedule Cont'd  
T25N-R58E- Sections 14, 15, 22 & 23  
RichlandCounty, Montana

**Tract B (80.00 Acres)**

**Mineral and Royalty Owners**

Dale Williston Minerals 2012-B  
Dale/Peregrine Minerals Fund LP  
Dale/P Minerals Limited Partnership  
Brent J. Morse  
Myrna V. & Ross D. Peace  
Burtis W. & Anne Meyer Family Trust  
Rigs the Land Dog, LLC  
Kraken Oil & Gas, LLC  
J and R Hunter, LLC  
Virginia M. Davidson & Kincaid Davidson  
Family Tree Corp.  
Wesley Frank McGhee  
Diversified Rox Minerals, LLC  
BRD Royalty Holdings, LLC  
Kimbell Royalty Holdings, LLC  
Rivercrest Royalties II, LLC  
The Burnett Foundation  
KRP Bakken I, LLC  
RTM Minerals, LLC  
Lowry Energy Partners  
David Clark  
Kirby L. Dasinger  
**Working Interest Owners**  
David Clark  
Trilogy Oil and Gas, LLC  
Kraken Oil & Gas, LLC  
Brigham Oil & Gas, LP

**Tract C (40.00 Acres)**

**Mineral and Royalty Owners**

James P. Byren Mineral Trust  
James P. Craven  
Kathleen M. McClaskey  
Michael F. Craven  
Robert F. Craven, Jr.  
Theresa M. Parks  
Mary Louise Byrne  
Sister Sarah James  
Elizabeth Theresa Byrne  
Arlen J. Moran  
Michael A. Moran  
Tammy D. Dynneson  
Carla Rasmussen  
Christi Madsen  
Connie Smith  
Glen Vanderhoof  
Wanda Peterson  
B.Barton Fisher & Kay Fisher  
Blair Fisher  
Brenda Teske  
Brian Fisher  
Jerry A. Fisher  
Jo Anne Brooks  
Nadine Fisher  
James E. Strand  
Judith A. Egr  
Sandra K. Alto  
Scott D. Strand  
Ellico Resources, Inc.  
Kirby L. Dasinger  
Kaleb M. Dasinger  
Sundheim Oil Corp.  
Cindy M. Macaffree  
Edward L. Macaffree  
Kitty J. Songer  
Patricia L. Wilson  
Roger D. McCaffree  
Sandra C. Day  
The Grebe Family Trust  
Wanda A. Ruff

**Mineral and Royalty Owners (Tract C Con't)**

Ronald Knight  
Kathleen Doppler  
Gordon W. G. Kern & Kathryn Kern  
Glenn Sedlacek  
Helen Sedlacek  
Leon & Norleen Conitz  
Patricia Swenson-Green  
SS/GAE, LTD  
Atropos Exploratoin Company  
Chelsey Jo Jennings  
Inland Oil & Gas Corp.  
Melissa McLeod  
Glen E Paulsen  
Gayle Garner Roski Rev. Trust  
James E. & Cherron Munson Rev Trust  
Mary Anne Garner Fisone Rev Trust  
Tucker Garner O&G, LLC  
Joe M. Halvorsen Irrev. Trust

**Working Interest Owners**

Blackbear Oil & Gas, LLC  
Blackland Petroleum, LLC  
Continental Resources, Inc.  
Dee Bently, Inc.  
Ellico Resourecs, Inc.  
Gunlikson Petroleum, Inc.  
Kenneth J. Kundryk  
Key Production Co., Inc.  
Kraken Oil & Gas, LLC  
Marshall Resources, LLC  
NIWOT Resources, LLC  
Prima Exploration, Inc.  
Rim Nominee Partnership  
Sundheim Oil Corp.  
Vesco Family LLLP



Ownership Schedule Cont'd  
T25N-R58E- Sections 14,15, 22 & 23  
RichlandCounty, Montana

**Tract D (40.00 Acres)**

**Mineral and Royalty Owners**

Michael A. Moran  
Tammy D. Dynneson  
Brenda Teske  
Brian Fisher  
Inland Oil & Gas Corp.  
Elizabeth T. Byrne  
Elco Resources, Inc.  
Gayle G. Roski  
Glen Vanderhoof  
Glenn Sedlacek  
Helen Sedlacek  
Gordon W.G. Kern & Kathryn Kern  
James E. Strand  
James P. Byrne Mineral Trust  
James P. Craven  
Jo Ann Brooks  
Joe M. Halvorsen Irrev. Trust  
Judtih A. Egr  
Kathleen M. McClaskey  
Kathleen S. Dopler  
Kitty J. Songer  
Knapp Oil Corp.  
Leon & Norleen Conitz  
Mary Louise Byrne  
Melissa McLeod  
Michael F. Craven  
Patricia L. Wilson  
Patricia Sweson-Green  
Ronald Knight  
Sandra C. Day  
Sister Sarah James  
SS/GAE, Ltd.  
Atropos Exploration Company  
Sundheim Oil Corp.  
The Grebe Family Trust  
Theresea Parks  
Wanda Peterson

**Tract D (40.00 Acres)**

**Working Interest**

Kraken Oil & Gas, LLC  
Michael A. Moran  
Tammy D. Dynneson  
Brenda Teske  
Brian Fisher  
Inland Oil & Gas Corp.  
Elizabeth T. Byrne  
Elco Resources, Inc.  
Gayle G. Roski  
Glen Vanderhoof  
Glenn Sedlacek  
Helen Sedlacek  
Gordon W.G. Kern & Kathryn Kern  
James E. Strand  
James P. Byrne Mineral Trust  
James P. Craven  
Jo Ann Brooks  
Joe M. Halvorsen Irrev. Trust  
Judtih A. Egr  
Kathleen M. McClaskey  
Kathleen S. Dopler  
Kitty J. Songer  
Knapp Oil Corp.  
Leon & Norleen Conitz  
Mary Louise Byrne  
Melissa McLeod  
Michael F. Craven  
Patricia L. Wilson  
Patricia Sweson-Green  
Ronald Knight  
Sandra C. Day  
Sister Sarah James  
SS/GAE, Ltd.  
Atropos Exploration Company  
Sundheim Oil Corp.  
The Grebe Family Trust  
Theresea Parks  
Wanda Peterson

**Tract E (160.00 Acres)**

**Mineral and Royalty Owners**

Dale Williston Minerals 2012-B  
Dale/Peregrine Minerals Fund LP  
Dale/P Minerals Limited Partnership  
Brent J. Morse  
Milo C. Hunter  
Sandra Iverson  
Morris Hunter  
Joe M. Halvorsen Irrev. Trust  
Rigs the Land Dog, LLC  
Kraken Oil & Gas, LLC  
Wesley Frank McGhee  
Elco Resources, Inc.  
Knapp Oil Corp.  
Sundheim Oil Corp.  
Kirby L. Dasinger

**Tract F (280.00 Acres)**

**Mineral and Royalty Owners**

Dale Williston Minerals 2012-B  
Dale/Peregrine Minerals Fund LP  
Dale/P Minerals Limited Partnership  
Brent J. Morse  
Milo C. Hunter  
Sandra Iverson  
Morris Hunter  
Steven Sheard  
Stuart Sheard  
Spencer Sheard  
Rigs the Land Dog, LLC  
Kraken Oil & Gas, LLC  
Wesley Frank McGhee  
Ida Halvorsen  
Lloyd C. Hage  
Glady's M. Sheard  
Eva H. Hage

**Working Interest**

Kraken Oil & Gas, LLC  
Sundheim Oil Corp.  
Brigham Oil & Gas, LP  
KKREP, LLC

**Working Interest**

Kraken Oil & Gas, LLC  
Brigham Oil & Gas, LP





Ownership Schedule Cont'd  
T25N-R58E- Sections 14, 15, 22 & 23  
RichlandCounty, Montana

**Tract F (280.00 Acres)**

**Mineral and Royalty Owners**

Dale Willston Minerals 2012-B  
Dale/Peregrine Minerals Fund LP  
Dale/P Minerals Limited Partnership  
Brent J. Morse  
Milo C. Hunter  
Sandra Iverson  
Morris Hunter  
Steven Sheard  
Stuart Sheard  
Spencer Sheard  
Rigs the Land Dog, LLC  
Kraken Oil & Gas, LLC  
Wesley Frank McGhee  
Ida Halvorsen  
Lloyd C. Hage  
Glady's M. Sheard  
Eva H. Hage  
Kirby L. Dasinger

**Working Interest**

Kraken Oil & Gas, LLC  
Brigham Oil & Gas, LP

**Tract G (160.00 Acres)**

**Mineral and Royalty Owners**

Sandra K. Alto  
Scott D. Strand  
Peg E. Mayland  
Everest Energy, LLC  
Glen E. Paulsen  
Sheryl L. Cameron  
Lori Ann Reiss  
Christin L. Noyes  
Judy Englund  
Terry Anvik  
Michael Anvik  
Marlys Marie Anvik  
Sheri Johnson  
Randy Skov  
Laurie Bauman  
Jennie Horn  
Patti Fogle  
Vern Anvik  
Lisa Schmitz  
Dianne Brottem  
Maryann Heil Mabon  
Charlene Heil  
David Belakjon  
Roxanne & Vernon Pierce  
Edward L. McCaffree  
Roger D. McCaffree  
Brian Belakjon  
Kirstin Belakjon-Cayko  
Susan Stearns  
Pamela Hestekin  
Donald C. Hestekin  
Jeanne Hartert  
Brenda Teske  
Chelsey Jo Jennings  
Blair Fisher  
Brian Fisher  
Wanda A. Ruff  
Merrill C. Rivinius  
B. Barton Fisher & Kay Fisher  
Cindy McCaffree  
Marilyn S. Vanstralen

**Tract G (Con't)**

**Mineral and Royalty Owners**

Patricia L. Wilson  
Kitty J. Songer  
Dudley J. Stuber  
Stuber Land & Royalty  
Terry L. Harris  
Robert Post Johnson  
Sandra C. Carter  
James E. Strand  
Katherine Rae Lacy  
Connie Kae Collings  
Jerry A. Fisher  
Nadine Fisher  
The Grebe Family Trust  
Tina Thorson  
Inland Oil & Gas Corp.  
Jo Ann Brooks  
Judith A. Egr  
Knapp Oil Corp.  
Larry D. Kern  
Leon & Norleen Conitz  
Melissa McLeod  
Melving G. Maier  
Northland Services Inc.  
Patrica Swenson-Green  
Patrick Elliott  
Paulette P. Kern  
Roger Borchert  
Ronald Knight  
Sundheim Oil Corp.  
Valerie Dawn Webb  
**Working Interest**  
Kraken Oil & Gas, LLC  
Basin Acquisition Fund, LP  
Basin Co-Investment II, LP  
Brigham Oil & Gas LP  
Cobra Oil & Gas Corp.  
Sundheim Oil Corp.  
Knapp Oil Corp.  
Inland Oil & Gas Corp.



Ownership Schedule Cont'd  
T25N-R58E- Sections 14, 15, 22 & 23  
RichlandCounty, Montana

**Tract H (320.00 Acres)**

**Mineral and Royalty Owners**

Artuhur & Gertrude Paul  
Everest Energy, LLC  
B. Barton Fisher & Kay Fisher  
Blair Fisher  
Brenda Teske  
Brian Fisher  
Charles J. Petereson Trust  
Cindy McCaffree  
Edward McCaffree  
Roxanne Pierce  
David Belakjon  
Brian Belakjon  
Kirstin Belakjon-Cayko  
Tina Thorson  
Vernon Pierce  
Elliott Oil Corp.  
Glen E. Paulson  
Glen R. Bruhschwein  
Gordon W. Schnell  
James E. Strand  
Jerry A. Fisher  
Jo Ann Brooks  
John & Louise Sherman  
Judith Egr  
Judy Englund  
Kirby L. Dasinger  
Kitty J. Songer  
Larry D. Kern  
Marilyn Vanstralen  
Michael C. Waller  
Milo C. Hunter  
Morris Hunter  
Nadine Fisher  
Nesthakchen LLLP  
Patricia L. Wilson  
Apaulette P. Kern  
Randall N. Sickler Family Trust  
Roger D. McCaffree  
Ronald Knight  
Sandra C. Day  
Sandra Iverson

Sandra K. Alto  
Scott D. Strand  
Sharyl Maier  
Sundheim Oil Corp.  
The Grebe Family Trust  
Timothy A. Priebe  
Wanda Ruff  
Florida Exploration Company  
Sonora Petroleum Corp.  
**Working Interest**  
Segal Oil & Gas, Inc.  
Kraken Oil & Gas, LLC  
Cow Gulch Oil Company  
East End Energy, Inc.  
Basin Acquisition Fund, LP  
Mark Gatof  
Monkota Petroleum Cop.  
Robert Lloyd Segal  
TCG Limited Partnership

**Tract I (160.00 Acres)**

**Mineral and Royalty Owners**

Rodger Christiansen  
Richard J. Christiansen  
Donna L. Umback  
Diane Miller  
Maryann Danielson  
Alma L. Christiansen  
Dean A. Jacobson Res. Trust  
Viola L. Jacobson  
Debra D. Hollister  
Jana L. Clinton  
Michael G. Miller  
Jennifer D. Powers  
Stefani M. Powers  
Jeffrey D. Powers  
Florida Exploration Company  
Sonora Petroleum Corp.

**Tract J (160.00 Acres)**

**Mineral and Royalty Owners**

Nancy Pawloski  
Laura Ann Pawlowski  
Jeffrey J. Sundheim  
Scott E. Sundheim  
Rhonda Fay Cayko  
Eric L. Sundheim  
Delores Frison  
G'Neil Sundheim  
Jerry Sundheim  
Jimmy Sundheim  
JuDean Sundheim  
Orion A. Sundheim  
Robert E. Sundheim  
Milton D. McKenzie Trust  
1984 Brett Allen McKenzie Rev. Trust  
1984 Bart McKenzie Rev. Trust  
Ullr Properties  
Pioneer Mineral Interests II,LLC  
A.B. Potter Rev. Trust  
Jones County Minerals, Inc.  
Twoash, Ltd.

**Working Interest Tract I**

Arnold Greenberg  
Cow Gulch Oil Company  
East End Energy, Inc.  
Basin Acquisition Fund  
Kraken Oil & Gas, LLC  
Mark Gatof  
Monkota Petroleum Corp.  
Robert L. Segal  
Segal Oil & Gas, Inc.  
TCG Limited Partnership

**Working Interest**

Basin Acquisition Fund  
Basin Co-Investment Fund  
Beyond Horizon, LLC  
Cobra Oil & Gas Corp.  
Equinor  
Kraken Oil & Gas, LLC



Ownership Schedule Cont'd  
T25N-R58E- Sections 14, 15, 22 & 23  
RichlandCounty, Montana

**Tract K (160.00 Acres)**

**Mineral and Royalty Owners**

Joann & Joseph Ryan  
Sobolik Family Trust  
Leon C. Martin  
Sharon Louise Shaide  
Linda George  
Donald Monson  
Robert Monson  
Mons Gary Monson  
Richard Simmons  
Earl F. Anvik  
Elaine Weber  
Lawrence H. Anvik  
Lynn Anvik Peterson  
Stanley Anvik  
Ardean Anvik  
Jayme L. Brucher  
Joni Lynn La Centra  
Jana C. Hess  
Julie Marie Brewer  
Matthew J. Sattler  
Jaianna C. Sattler  
Kevin M. Anvik  
Monica M. Martin  
Nelda R. Bishop  
Rollyn G. Anvik  
Danny Anvik  
Douglas Anvik  
Lyle R. Panasuk  
LaVelle Anvik  
Roger Anvik  
David L. & Dane Mohl  
Sandra F. Anvik  
Vitesse Energy, LLC  
Stewart Geological, Inc.  
MBI Oil & Gas, LLC  
Brian P. Kurth  
**Working Interest**  
Basin Acquisition Fund  
Basin Co-Investment Fund  
Cobra Oil & Gas Corp.  
Equinor

**Tract L (160.00 Acres)**

**Mineral and Royalty Owners**

J and R Hunter, LLC  
Kincaid Davidson  
Virginia Davidson  
Maeleata Mae Clark  
White Rock Oil & Gas, LLC  
White Rick Oil & Gas Partners IOB, LP  
**Working Interest**  
Arnold Greenberg  
Cow Gulch Oil Company  
Dakota Ventures I, LLC  
East End Energy, Inc.  
Goldline Creek, LLC  
Grandhaven Energy, LLC  
KKREP, LLC  
Kraken Oil & Gas, LLC  
Mark S. Gatof  
Monkota Petroleum Corp.  
Paragon Oil & Gas, LLC  
Poplar Energy Company, LLC  
R.L. Fawcett  
Robert L. Segal Trust  
ROEC, Inc.  
Segal Oil & Gas, LLC  
TCG Limited Partnership  
Wendy Gatof Malina  
Wilbanks Acquisitions, LLC

**Tract M (160.00 Acres)**

**Mineral and Royalty Owners**

Randy Skov  
Michael T. Anvik  
Marlys M. Anvik  
Jennie Horn Anvik  
Vern Anvik  
Marlys Ritter  
Sher L. Johnson  
Terry Anvik  
Charlene Heil  
Dianne Brottem  
Laurie Bauman  
Lisa Schmitz

Mary Ann Heil Mabon  
Patti Fogle  
Grebe Family Trust  
Jerry A. Fisher  
Nadine Fisher  
Glen E. Paulsen  
Judy Englund  
Everest Energy, LLC  
Marilyn Van Stralen Trust  
Katherine R. Lacy  
Peg E. Smith  
Inland Oil and Gas Corp.  
Chelsey Jo Jennings  
Melissa McLeod  
Merrill C. Rivinius  
Bervery Rivinius  
Eileen Belakjon  
Roxanne Peirce  
Vernon Pierce  
David Belakjon  
James E. Strand  
Judith A. Egr  
Sandra K. Alto  
Scott D. Strand  
Leon & Norleen Conitz  
Patricia S. Green  
Jeanne Brooks  
Pamela Hestekin  
Donald Hestekin  
Bear Creek Energy, LLC  
MBI Oil & Gas, LLC  
Susan Stearns  
Cindy McCaffree  
Terry L. Harris  
Edward A. Paul  
Rhonda M. Edwards  
Good Shephers Royalty Trust  
Sandra C. Day  
Patricia L. Wilson  
Edward McCaffree

Kitty J. Songer  
Wanda A. Ruff  
Roger D. McCaffree  
Robert Post Johnson  
B. Barton Fisher  
Connie Kaie Collings  
Blair Fisher  
Knapp Oil Corp.  
Jo Anne Brookes  
Brian Fisher  
Brenda Teske  
Larry D. Kern  
Melvin G. Maier  
Paulette P. Kern  
Valerie Dawn Webb  
Vitesse Energy, LLC  
Brian P. Kurth  
Stewart Geological, Inc.  
Kaleb Dasinger  
**Working Interest**  
Basin Acquisition Fund  
Basin Co-Investment Fund  
Cobra Oil & Gas Corp  
Continental Resources, Inc.  
Endeavor Energy Resources, LP  
Equinor  
Knapp Oil Corp.  
Kraken Oil & Gas, LLC  
Posse Operating, Inc.  
Red River Resources, Inc.  
Roger N. Borchert  
Ronald Knight  
Sundheim Oil Corp.  
Twin City Technical, LLC



Ownership Schedule Cont'd  
T25N-R58E- Sections 14, 15, 22 & 23  
RichlandCounty, Montana

**Tract N (160.00 Acres)**

**Mineral and Royalty Owners**

Randy Skov  
Michael T. Anvik  
Marlys M. Anvik  
Jennie Horn Anvik  
Vern Anvik  
Marlys Ritter  
Sher L. Johnson  
Terry Anvik  
Charlene Heil  
Dianne Brottem  
Laurie Bauman  
Lisa Schmitz  
Mary Ann Heil Mabon  
Patti Fogle  
Grebe Family Trust  
Jerry A. Fisher  
Nadine Fisher  
Glen E. Paulsen  
Judy Englund  
Everest Energy, LLC  
Marilyn Van Stralen Trust  
Katherine R. Lacy  
Peg E. Smith  
Inland Oil and Gas Corp.  
Chelsey Jo Jennings  
Melissa McLeod  
Merrill C. Rivinius  
Beverly Rivinius  
Eileen Belakjon  
Roxanne Peirce  
Vernon Pierce  
David Belakjon  
James E. Strand  
Judith A. Egr  
Sandra K. Alto  
Scott D. Strand  
Leon & Norleen Conitz  
Patricia S. Green  
Jeanne Brooks  
Pamela Hestekin  
Donald Hestekin

Susan Stearns  
Cindy McCaffree  
Terry L. Harris  
Edward A. Paul  
Rhonda M. Edwards  
Good Shephers Royalty Trust  
Sandra C. Day  
Patricia L. Wilson  
Edward McCaffree  
Kitty J. Songer  
Wanda A. Ruff  
Roger D. McCaffree  
Robert Post Johnson  
B. Barton Fisher  
Connie Kaie Collings  
Blair Fisher  
Knapp Oil Corp.  
Jo Anne Brookes  
Brian Fisher  
Brenda Teske  
Larry D. Kern  
Melvin G. Maier  
Paulette P. Kern  
Valerie Dawn Webb  
Vitesse Energy, LLC  
Brian P. Kurth  
Stewart Geological, Inc.  
Kaleb Dasinger  
Bear Creek Energy, LLC  
MBI Oil & Gas, LLC  
**Working Interest Tract N**  
Beyond Horizon, LLC  
Brenda Teske  
Brian Fisher  
Continental Resources, Inc.  
Endeavor Energy Resources, LP  
Equinor  
JoAnn Brooks  
Knapp Oil Corp.  
Kraken Oil and Gas, LLC  
Larry D. Kern  
Melvin G. Maier

**Tract N Working Con't**

Paulette P. Kern  
Posse Operating, Inc.  
Red River Resources, Inc.  
Roger N. Borchert  
Ronald Knight  
Sundheim Oil Corp.  
Twin City Technical, LLC  
Valeri Dawn Webb

**Tract O (160.00 Acres)**

**Mineral and Royalty Owners**

Areta B. McKenzie Trust  
Bart B. McKenzie Rev. Trust  
Brett A. McKenzie Rev. Trust  
Kincaid & Virginia Davidson  
J and R Hunter, LLC  
Pioneer Mineral Interests II, LLC  
A. B. Potter Rev. Trust  
Family Tree Corp.  
KRP Bakken I, LLC  
Kimbell Royalty Holdings  
The Burnett Foundation  
Rivercrest Royalties II, LLC  
Diversified Rox Minerals, LLC  
BRD Royalty Holdings, LLC  
RTM Minerals, LLC  
Lowry Energy Partners  
Twoash, Ltd.  
Bryant Clark  
David Clark  
Denise Swedberg  
Joan Kosidowski  
Melissa J. Clark Rev. Trust  
Richard Clark  
UIIR Properties  
Jones County Minerals  
**Working Interest**  
Basin Acquisition Fund  
Basin Co-Investment Fund  
Cobra Oil & Gas Corp  
Dunn River Resources, LLC  
Equinor  
LSM Energy, Inc.  
Matthew H. Paris  
Sandra & Clifton Levorsen  
ULLR Properties  
Vitesse Energy, LLC



Ownership Schedule Cont'd  
T25N-R58E- Sections 14, 15, 22 & 23  
RichlandCounty, Montana

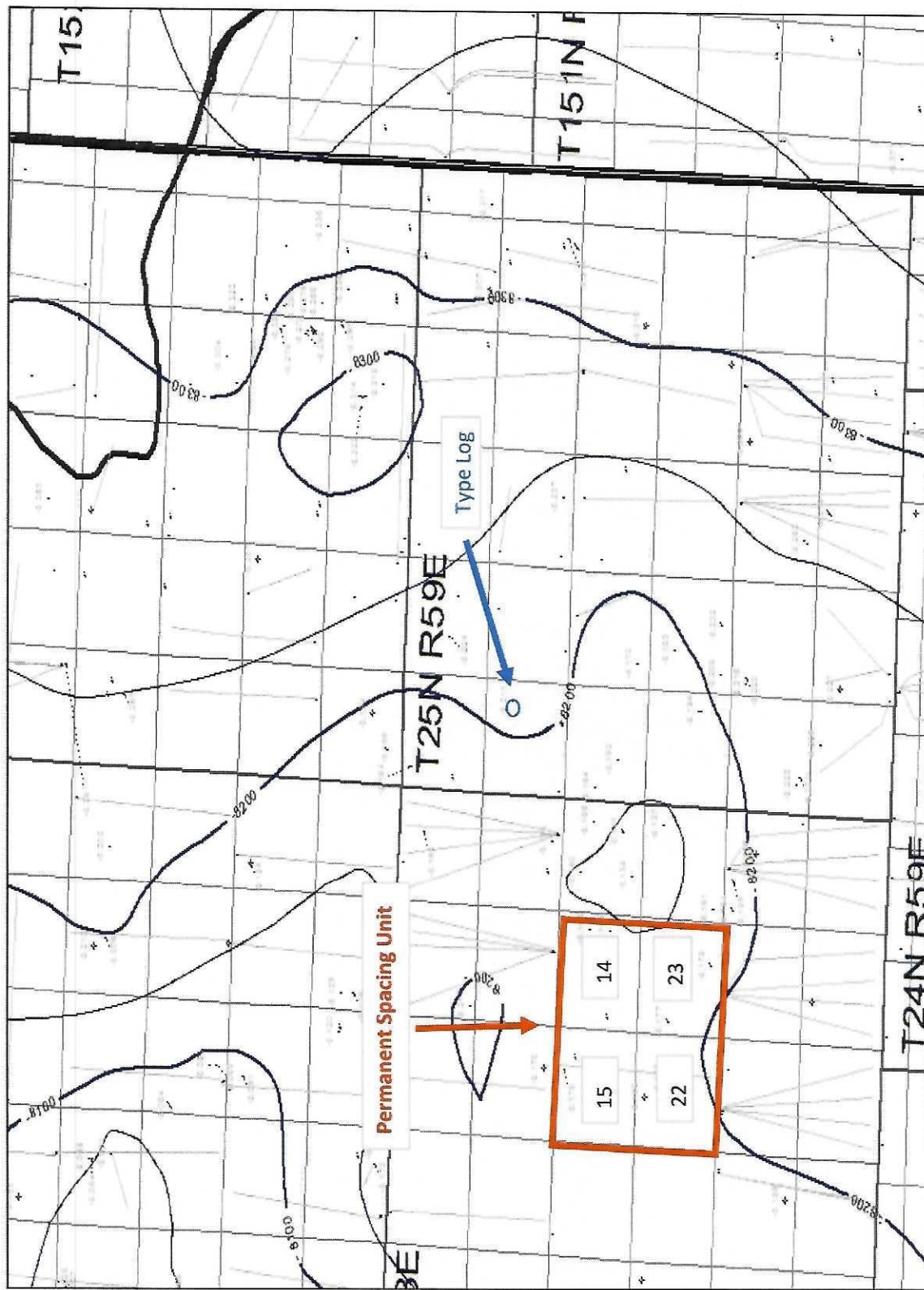
**Tract P (320.00 Acres)**

**Mineral and Royalty Owners**

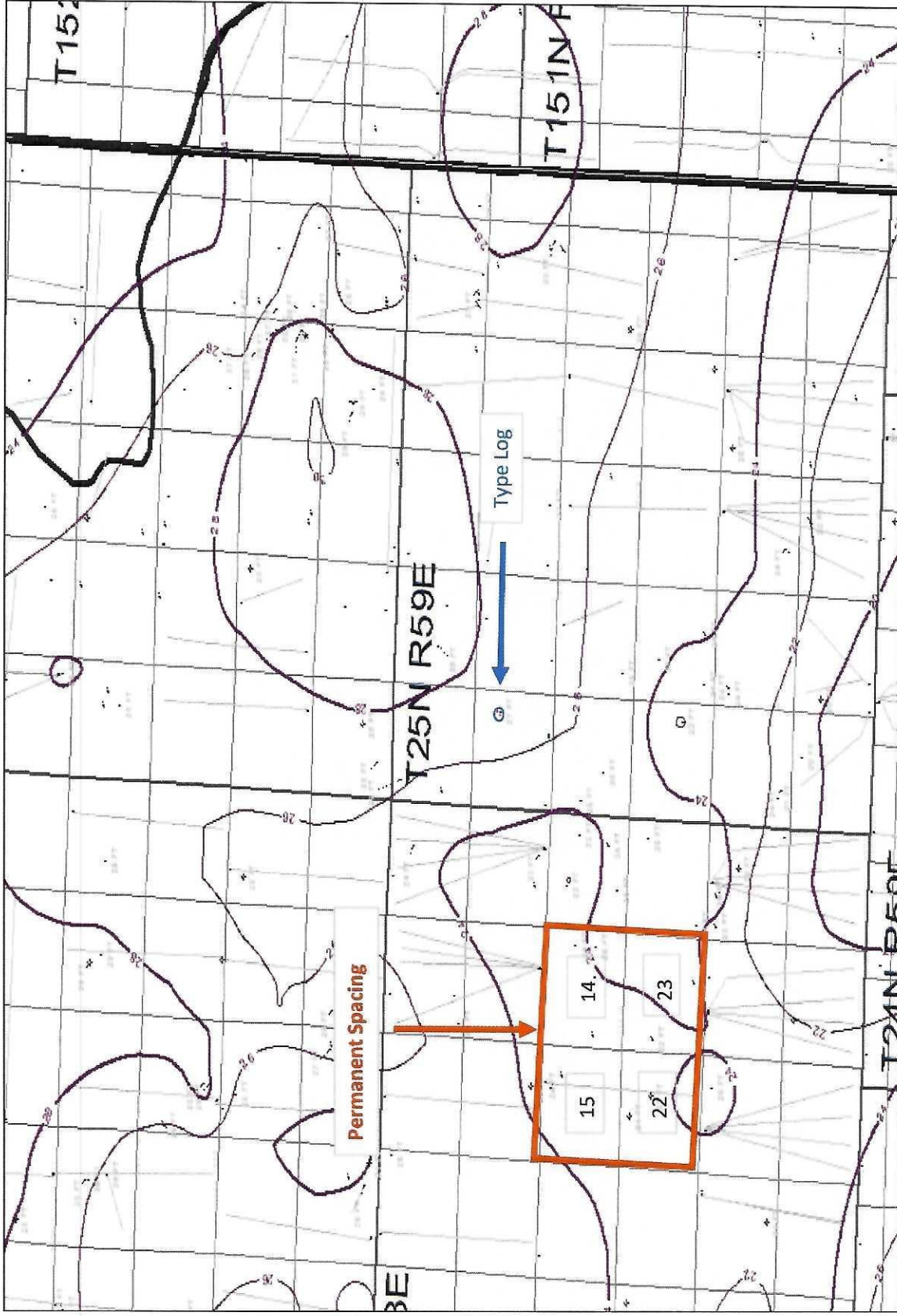
Areta B. McKenzie Trust  
Bart B. McKenzie Rev. Trust  
Brett A. McKenzie Rev. Trust  
Kincaid & Virginia Davidson  
J and R. Hunter, LLC  
Pioneer Mineral Interests, II, LLC  
A. B. Potter Rev. Trust  
Family Tree Corp.  
KRP Bakken I, LLC  
Kimbell Royalty Holdings, LLC  
The Burnett Foundation  
Rivercrest Royalties II, LLC  
Diversified Rox Minerals, LLC  
BRD Royalty Holdings, LLC  
RTM Minerals, LLC  
Lowry Energy Partners  
Twoash, Ltd.  
Bryant Clark  
David Clark  
Denise Swedberg  
Joan Kosidowski  
Melissa J. Clark Rev. Trust  
Richard Clark  
Brent J. Morse  
Burtis & Anne Meyer Family Trust  
Myrna & Ross Peace  
Rigs the Land Dog, LLC  
Dale Williston Minerals 2012-B  
Dale/Peregrine Minerals Fund, LP  
Dale/P Minerals Limited Partnership  
Ullr Properties  
Jones County Minerals, LLC

**Working Interest**

Basin Acquisition Fund  
Basin Co-Investment Fund  
Cobra Oil & Gas Corp  
Dunn River Resources, LLC  
Equinor  
LSM Energy, Inc.  
Matthew H. Paris  
Sandra & Clifton Levorsen  
ULLR Properties  
Vitesse Energy, LLC



**Top of Upper Bakken Shale Structure**  
 T25N-R58E, Sections 14, 15, 22 & 23  
 Richland County, Montana

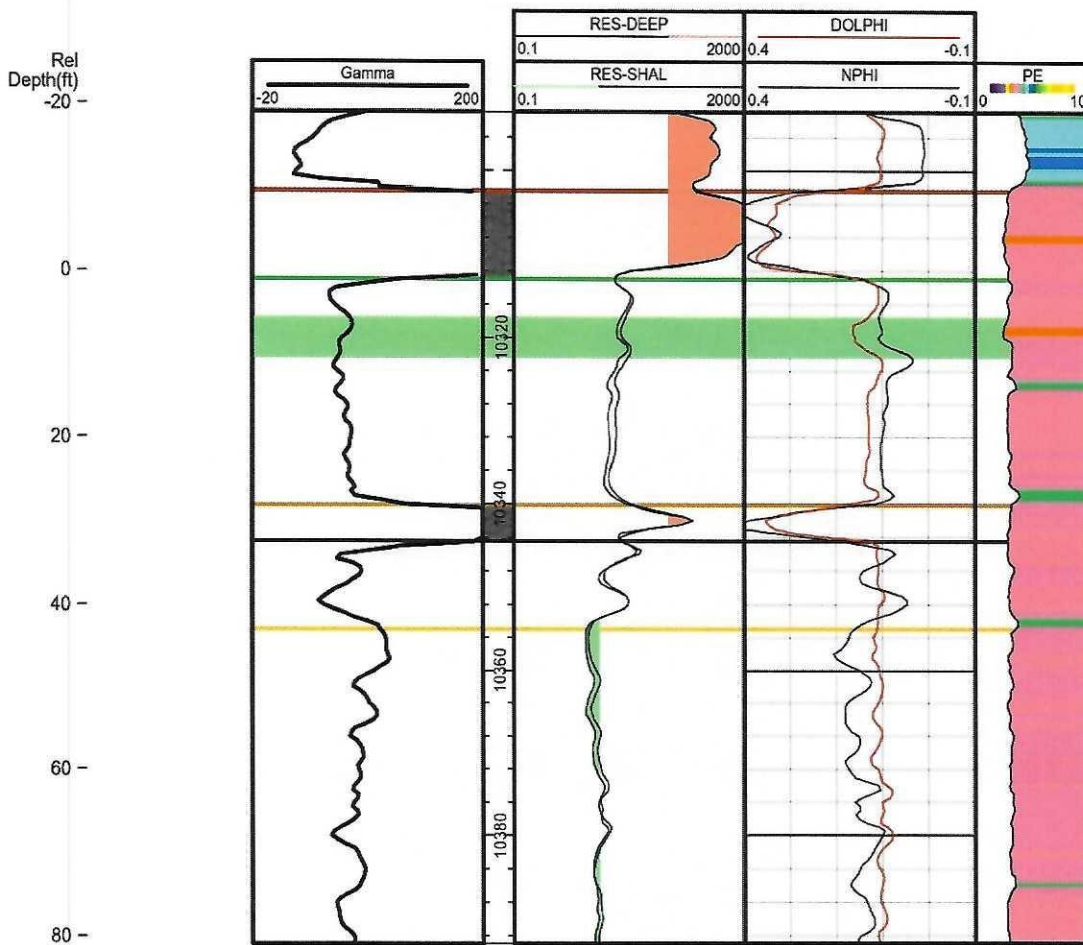


Middle Bakken Gross Isopach  
T25N-R58E- Sections 14,15, 22 & 23  
Richland County, Montana



250832166100

SANNES RONALD M  
DOYLE #H-7  
RICHLAND  
T25N R59E S7



Type Log - Bakken Section  
Permanent Spacing Unit  
T25N-R58E-Sections 14, 15, 22 & 23  
Richland County, Montana





01.17.2020

JWP

Kraken Oil & Gas, LLC

Taylor LW 14-23 #1H

Section 11, Township 25N Range 58E SEW 420' FSL x 2,020' FWL

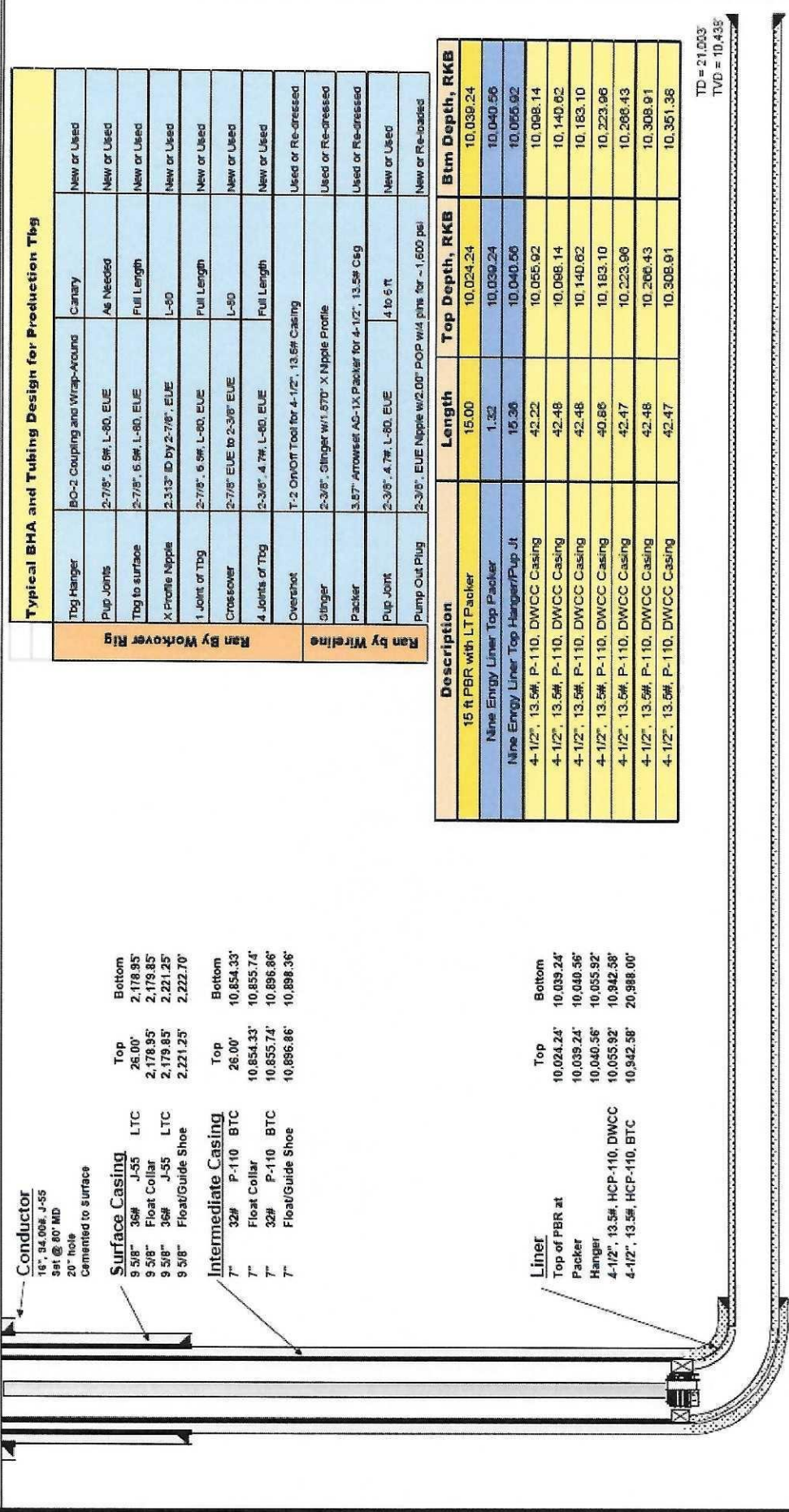
Middle Bakken

Elm Coulee, NE in Richland County, Montana

25-083-23368

WELLBORE SCHEMATIC

ELEV. 2,166' GL  
RKB = 28'



Typical BHA and Tubing Design for Production Tubg

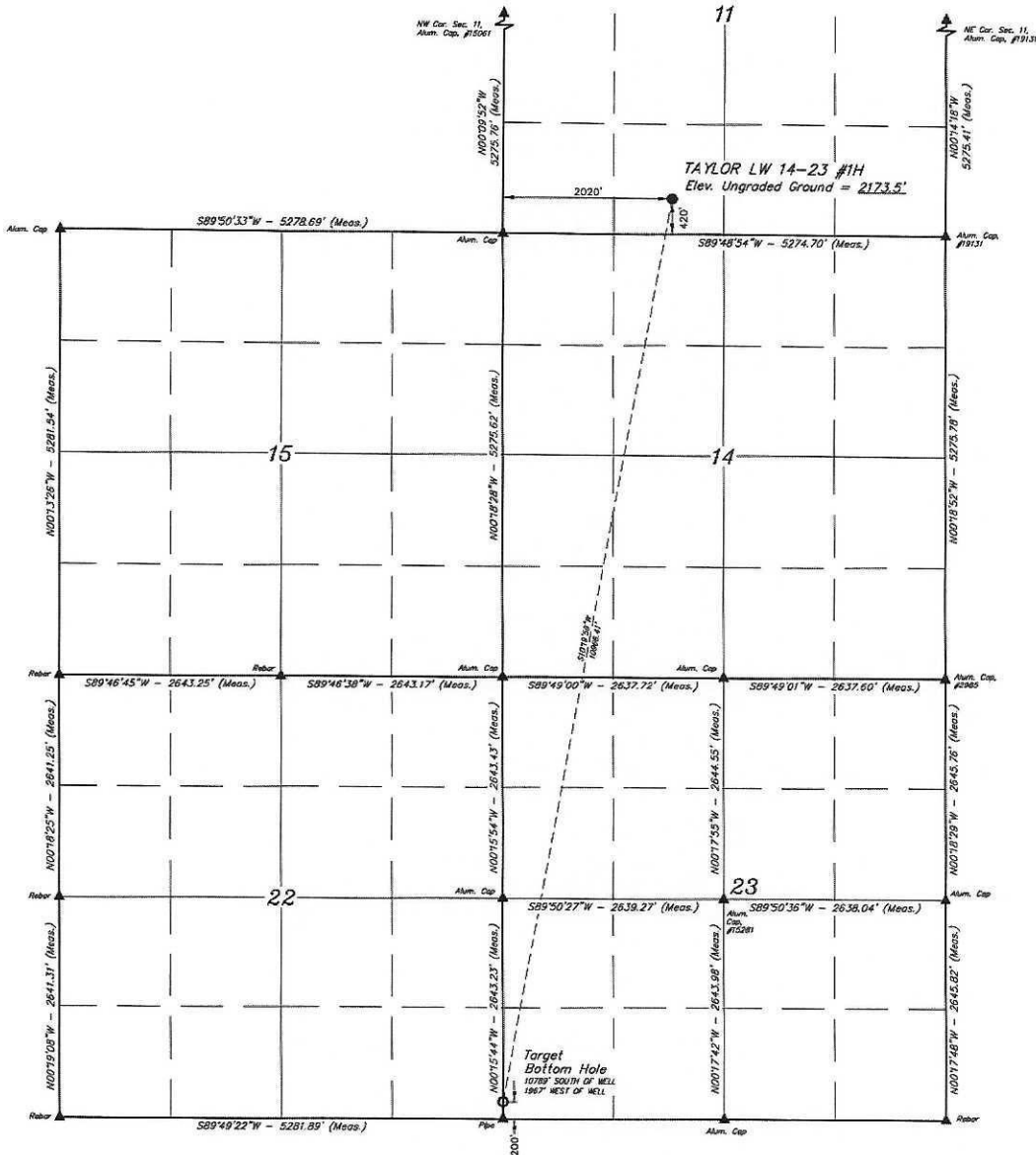
Tool Joint	BO-2 Coupling and Wrap-Around	Canary	New or Used
2-7/8" 5.5# L-80, EUE	As Needed		New or Used
2-7/8" 5.5# L-80, EUE	Full Length		New or Used
2-3/8" ID by 2-7/8" EUE	L-80		New or Used
2-7/8" 5.5# L-80, EUE	Full Length		New or Used
2-7/8" EUE to 2-3/8" EUE	L-80		New or Used
2-3/8" 4.7# L-80, EUE	Full Length		New or Used
T-2 On/Off Tool for 4-1/2", 13.5# Casing			Used or Re-dressed
2-3/8" Clinger w/1.570" X Nipple Profile			Used or Re-dressed
3.67" Arrowset AO-1X Packer for 4-1/2", 13.5# Csg			Used or Re-dressed
2-3/8" 4.7# L-80, EUE	4 to 6 ft		New or Used
2-3/8" EUE Nipple w/2.00" POP w/4 pins for ~1,600 psi			New or Re-loaded

Description	Length	Top Depth, RKB	Btm Depth, RKB
15 ft PBR with LTPacker	15.00	10,024.24	10,039.24
Nine Energy Liner Top Packer	1.32	10,039.24	10,040.56
Nine Energy Liner Top Hanger/Pup Jt	15.36	10,040.56	10,055.92
4-1/2", 13.5# P-110, DWCC Casing	42.22	10,055.92	10,098.14
4-1/2", 13.5# P-110, DWCC Casing	42.48	10,098.14	10,140.62
4-1/2", 13.5# P-110, DWCC Casing	42.48	10,140.62	10,183.10
4-1/2", 13.5# P-110, DWCC Casing	40.86	10,183.10	10,223.96
4-1/2", 13.5# P-110, DWCC Casing	42.47	10,223.96	10,266.43
4-1/2", 13.5# P-110, DWCC Casing	42.48	10,266.43	10,308.91
4-1/2", 13.5# P-110, DWCC Casing	42.47	10,308.91	10,351.38

TD = 21,033'  
TVD = 10,435'

- LEGEND:**  
 ● = PROPOSED WELLHEAD  
 ○ = TARGET BOTTOM HOLE  
 ▲ = SECTION CORNERS LOCATED

**NOTE:**  
 Distances referenced on plot to section lines are perpendicular.



NAD 83 (SURFACE LOCATION)	NAD 83 (TARGET BOTTOM HOLE)
LATITUDE = 47°55'36.52" (47.926811)	LATITUDE = 47°53'30.14" (47.892311)
LONGITUDE = 104°11'42.65" (104.194911)	LONGITUDE = 104°17'17.44" (104.288211)
NAD 27 (SURFACE LOCATION)	NAD 27 (TARGET BOTTOM HOLE)
LATITUDE = 47°55'36.45" (47.926809)	LATITUDE = 47°53'30.08" (47.892310)
LONGITUDE = 104°11'40.87" (104.194685)	LONGITUDE = 104°17'16.55" (104.287920)

**BASIS OF BEARINGS**  
 BASED UPON THE 1983 NAD 83 SYSTEM  
**BASIS OF ELEVATION**  
 BENCH MARK 12017 (4111.71) IS THE NEAREST ADJACENT BENCH MARK TO THE SURVEY POINT. THE BENCH MARK IS A 1.5 METER HIGH CONCRETE PIPER WITH A 1.5 METER HIGH IRON ROD. THE BENCH MARK IS LOCATED AT THE INTERSECTION OF THE INTERIOR GRADE AT SURVEY SAID ELEVATION IS MARKED AS BENCH 6977 1011

**UELS, LLC**  
 Corporate Office • 85 South 200 East  
 Vernal, UT 84078 • (435) 789-1017

THIS IS TO CERTIFY THAT THE SURVEY IS ACCURATE AND THAT THE SAME ARE TRUE AND CORRECT WITH ALL KNOWLEDGE AND BELIEF.

*Handwritten Signature*

REGISTERED SURVEYOR  
 STATE OF MONTANA

REV: 2 09-27-19 S.C.S. (ADD SECTIONS)

**KRAKEN OPERATING, LLC**

TAYLOR LW 14-23 #1H  
 SE 1/4 SW 1/4, SECTION 11, T25N, R58E, P.M.M.  
 RICHLAND COUNTY, MONTANA

SURVEYED BY	J.J. JR.	01-19-19	SCALE
DRAWN BY	S.C.S.	02-21-19	1" = 1000'

**WELL LOCATION PLAT**





**Kraken Operating LLC**  
**Permanent Spacing**  
**TAYLOR LW 14-23 #1H**  
**T25N R58E Sections 14, 15, 22 & 23**  
**Richland County, Montana**

**Reserves and Economic Analysis**

**Reservoir Properties**

Formation Type	Dolomitic Limestone
Vertical Thickness (ft)	38
Water Saturation	30%
Porosity	7%
Reservoir Temperature (deg F)	220
Oil Gravity (deg API)	42
Gas Gravity	0.95
GOR (SCF/STB)	1,000
Oil Formation Volume Factor	1.4 RB/STB

**OOIP and Recovery**

Spacing Unit Size (Ac)	2,560
OOIP (bbl/sec)	7,600,000
EUR - Decline Curve Analysis (bbl)	660,000
Oil Recovery Factor	4.3%

**Economics**

Product Pricing	3/17/2021 NYMEX Strip
Working Interest	100.00%
Net Revenue Interest	80.00%
Net Sales (M)	\$ 30,875
Operating Expense (M)	\$ 5,769
Severance Tax (M)	\$ 1,732
Net Income (M)	\$ 23,374
Net Investment (M)	\$ 6,771
Undiscounted Net/Investment	3.45

Kraken Operating LLC  
Production Profile  
TAYLOR LW 14-23 #1H

T25N R58E Sections 14, 15, 22 & 23  
Richland County, Montana  
25-083-23368-0000

